

Summer 2025

**Longcliffe**  
CALCIUM CARBONATES

# LOCAL

## Planning for progress



*New driver Becky joins Longcliffe at a particularly exciting time for the company.*

**Welcome to our sixth – extra special version of LoCAL. Find inside a four-page supplement devoted to bringing you some very big news for Longcliffe’s people and the future of our business.**

I am very pleased to report that since the last issue of LoCAL was distributed, we have received formal planning permission from Derbyshire County Council to go ahead with our extension of Brassington Moor Quarry. The enclosed gives you more detail about our plans for this new area – Aldwark South – and explains some of the steps

we have to take before we can start extracting calcium carbonate there.

Inside the main newsletter I hope you enjoy reading about people who have retired and some whom we have welcomed over recent months (including new driver Becky above). In addition, among other stories, you can find out about safety initiatives and some of the projects we have been supporting in the local community.

Our Group Energy Director John Shields brings you an overview of our progress in this area. And I am particularly happy

to bring you great news for our fleet and logistics teams – a Gold award in recognition of progress across the board.

We hope you enjoy catching up on Longcliffe’s news and would welcome any feedback or suggestions for future issues (see back page for email address). Wishing everyone an enjoyable summer.

**Paul Boustead**  
Managing Director, Longcliffe Group

## Gold standard for fleet



Group MD Paul Boustead (right) with Logistics Manager James Hopkinson

**We're thrilled to announce that we have achieved the highest FORS - Fleet Operator Recognition Scheme Standard – Gold!**

After three years at Silver, this upgrade recognises our commitment to safety, efficiency, and sustainability. It also highlights the incredible efforts of our logistics team, including professional development, community engagement, and environmental performance.

Logistics Manager James Hopkinson said: "The Gold Standard demands a higher level of professional development for managers and drivers. We're proud to achieve this top accreditation."



## New drivers out on the road



Left to right: Tomek, Gary, John, Becky, Jamie, Adam, Ollie, Scott (Steve was unavailable that day)

Since our last issue of LoCAL we are delighted to have welcomed nine new drivers to Longcliffe. Through a combination of very positive start to business in 2025, reduced availability of 8-wheeled tipper drivers and some of our older drivers reducing their hours, our driver group needed boosting.

**Introducing Steve, Becky, Scott, Adam, John, Tomek, Gary, Jamie and Oliver.**

Logistics Manager James Hopkinson said: "With a total of 134 HGV driving years under their belts, we are pleased to add a wealth of both tipper and tanker driving experience to our team. Supporting the local community and economy are very important

priorities for us so we are also proud to say that most of our new drivers are locally based."

Tipper-driver **Steve** from Wirksworth has been driving for 20 years. He loves the freedom of being on the road and planning his days out. On the flipside he finds it can be tricky delivering to new housing estate building sites where the delivery spot is somewhere in a field that is being transformed!

**Becky** from Darley Dale is helping to showcase that HGV driving is a great career choice for everyone. With Longcliffe being a long-established local company and highly recommended by local people, Becky

## Investment in new mills is saving energy

**In the last year we have been busy installing and optimising the operation of two new mills. One of the key drivers for us investing over £2 million in these mills was an expected reduction in energy use.**

Development Director Ian McDonald gives an update: "With the first new mill fully up and running and the other at commissioning stage, we are delighted to report that we are already seeing a 10-20% saving on energy costs, a significant contributor to our sustainability goals.

"Our first 'TCM' mill is well established and producing tightly specified products for customers across the country.

Previously our mill had to be fed by material moved and delivered by tankers. With this mill fed directly by conveyor from 'feed silos' nearby, we are also achieving a reduction in internal tanker movement of material by 40%.

"And our new mills are good news for a wider reduction in carbon footprint through a product we are making for the cement industry. Our production process has a lower carbon footprint than the process used to produce cement. In order to reduce the tonnes of carbon dioxide the cement-making process produces, cement manufacturers are now taking our pure non-processed calcium carbonate and mixing it into the cement product. This does not affect

ad



wanted to join us. She finds traffic challenging but loves being in her own 'bubble' when out on deliveries.

**Scott** from Wirksworth applies his 29 years of experience to delivering construction materials around Derbyshire for us. He likes the fact the job means he can be by himself but finds other driver behaviours on the roads sometimes challenging.

Matlock-based **Adam** simply enjoys driving but wanted to work for a well-established and reputable company. Like his fellow drivers he likes his own company whilst driving his tipper truck but finds the traffic can be very testing.

the performance of the cement but does deliver a significantly lower carbon impact per tonne of cement produced."

The new mills are helping us increase our ability to make products more efficiently 'to order' and streamline our process through to the customer.

*Driver Liam Fletcher gets ready to deliver one of our industrial powders products from the new mill into a customer silo*



**John** from Kingsley has driving in the family – following in his dad's footsteps, he has now been driving for 19 years. He drives tippers and tankers for us and loves getting around the country. Campbeltown in Scotland is one of his favourite and most scenic delivery destinations.

**Gary** who lives in Clay Cross started out as an apprentice fitter but has now been a driver for 20 years. He worked for us as a sub-contractor driver many years ago but has now joined our team as a relief driver for tanker deliveries. He loves the freedom of being on the road and as challenging as HGV driving can be, he remains committed and passionate about what he does every day.

Alfreton-based **Jamie** took his HGV exam after being made redundant from a previous job. He has now been driving for six years and was encouraged to apply to join us having heard good feedback from friends who already worked here. He loves getting to see new parts of the country and is now busy learning Longcliffe's policies and customer requirements.

**Oliver**, who is based in Matlock, has loved the freedom of the road for three years. He had heard through word of mouth, that Longcliffe was a good team and company to work for and now loves going to different places. He finds that other road users can be the biggest challenge of his job!!

And finally, we have **Tomek** who lives in Derby and has been driving for 20 years. A friend recommendation has brought him to the Longcliffe driving team where he goes out on the road delivering both our industrial powders and aggregates products to a variety of customers.

## New dumper delivers for Longcliffe

Six months ago, we welcomed a new Marubeni-Komatsu dumper truck to the fleet at Brassington Moor Quarry. And the five-metre tall, 110-tonne (loaded) vehicle is already delivering significant efficiency improvements to our calcium carbonates operation.



*The five-metre tall Komatsu dumper truck*

As the dumper automatically weighs the stone as it's being loaded, the operator can ensure it carries the optimum amount each time it moves between the rock face and the primary crusher. This technology has resulted in us being able to move on average an additional ten tonnes each time.

- Over a week the dumper moves 130 times between the rock face and the primary crusher.
- That means we are moving an additional 1,300 tonnes for processing each week - with no extra dumper movements or fuel being used.
- Over a year we will see an additional 67,000 tonnes of stone moved just through our investment in this state-of-the-art machine.
- This means a reduction in fuel used per tonne of rock moved, contributing to our sustainability targets.

And even though the dumper is carrying a heavier load, it is quieter due to its enclosed engine bay.

As with all areas of our operation, we are looking to adopt the best available technology - for our dumper fleet, this machine is giving us a benchmark specification for the future.



# Our commitment to sustainability

An update from John Shields, Group Energy Director

## As our sustainability policy states:

**“We are committed to operate our business successfully, and in the most sustainable way possible – across the three interdependent areas of environmental impact; social responsibility; and economic performance.”**

**In our drive to increase the sustainability of our business, energy continues to be a hot topic and is as ever central to Longcliffe operations.**



*Increasing our use of renewable energy is one of our key carbon reduction actions*

We are saving wherever it is economical to do so: improvements to monitoring and controls, screening, and processing; and new milling capacity with our recently installed TCM mills (see article on page 2 for more detail) – are just a few examples. Even our lorries are now pushing 10mpg. This is a good thing as it is forcing the trials we are doing with lower carbon fuels like Hydrogenated Vegetable Oil (HVO) and electric to clear ever higher hurdles.

All the while, every unit of electricity consumed at our head office - including the new vehicle charging stations and smaller sites - is certified as renewable, and therefore contributing to our lower carbon goals. We are also installing solar panels at our Curzon Lodge Transport Depot (see page 6) and continuing to engage with the local network operator to install more capacity at Ryder Point and channel more wind-powered energy directly into operations.

Of course, carbon is only part of the environmental picture. Perhaps precisely because we cannot avoid the fact that we are in a high-energy intensity business providing vital products for wider society, we should also be mindful of the great good that quarrying operations can and do achieve for biodiversity. We recently hosted a seventh butterfly day at Hoe Grange Quarry, and elsewhere around the quarries, we continue to work on managing habitats for newts and other

species. We also recently joined more than 60 farmers in becoming a member of the Peakland Environmental Farmers Group, to help deliver biodiversity gains in one of the country's largest environmental schemes.

Our headline target of achieving 'Net-Zero-to-Weighbridge' – i.e. to develop our onsite operation to the point that it is carbon neutral - remains central to our overall plans, but there's no denying that it's a tough target, and comes at a huge cost to the company if we miss it. Some things like the weather, we can't do anything about; in addition, market conditions also currently appear more favourable for our high-purity, finer products and less so for our aggregates - meaning that just the physics of milling to finer grades is pushing our average emissions-per-tonne higher.

However we can all be aware of those things we do have control over: responsibility for bright ideas, for the right decisions, and for energy that's then saved - that's all down to us, and bit by bit, unit by unit, we likely have a lot more impact than we realise. These can sometimes be little things - like the acquisition of a second drill rig to avoid one having to track between Ryder and BMQ - but they do add up. At a time when people sometimes feel helpless in the face of climate change, it's genuinely empowering to see that across our business we can all make a difference.

## How is Longcliffe material used?

### Introducing Mapei – adhesive manufacturer

Continuing our series of articles about the wide variety of applications of our 100 products, here we introduce one of our long-standing customers, Mapei. The company uses our industrial powders products for the production of tile adhesives.



**“Our very high purity calcium carbonate is used in a range of everyday products.”**

**Darren Mooney**  
**Longcliffe**  
**Commercial**  
**Director**

Longcliffe Commercial Director Darren Mooney says: “Many local people may be unaware that our very high purity calcium carbonate is used in a range of everyday products - you may even be using them right now if you are tackling DIY projects your home. Based near Birmingham, Mapei is one of our many well-established customers who use our industrial powders products for their tile adhesive manufacture”.

Phil Breakspear, Mapei Managing Director comments: “As a global manufacturer of chemical products for the building industry, Mapei provides products for every field of application. For more than 20 years, Longcliffe has played a key role in our UK manufacturing process, supplying the highest quality raw materials for many of our best-selling tile adhesives and levelling compounds, including Keraquick S1 Zero, Ultraplan Renovation Screed 3240, Latexplan Trade and many more”.

# Welcome to the family Daisy and Emma



Left to right: Daisy Salt and Emma Mycock

With Amy Mycock (Emma's sister) stepping up as Team Leader, our lab has been able to extend its operating hours to 5am – 7pm, supporting our growing business.

Emma says: "There's so much to learn, every day there is something new to do! Who knew there were so many uses for stone! I can't thank everyone enough for being so welcoming and supportive!"

Daisy adds: "I have learnt so many new skills already - I'm excited to see where my career takes me."

Lab Supervisor Julie Carey says: "Emma and Daisy have taken to their roles really well. I'm really pleased with their passion to learn and excited for their future with us. It's fantastic to see the next generation of Longcliffe employees thriving."

We're delighted to welcome Daisy Salt and Emma Mycock to our Brassington Moor Quarry laboratory team. Both have settled in really well since they joined at the end of last year.

Longcliffe has always been a family business, and that extends to the people who work here. Emma is following in the footsteps of both her eldest sister and her late grandad, while Daisy's father works in our Transport Depot.

## Experiencing working life at Longcliffe

We are keen to play our part in promoting the diversity of careers available here at Longcliffe. During June and July, it was our pleasure to host seven students for work experience from a mixture of Year 10 and Year 12 from Highfields, St Marys, Queen Elizabeth Grammar and Flamsteed Community schools.

Belle, Igi, Seth and William spent a few days observing the work of the team in our Brassington Moor Quarry and Longfloor laboratories where the quality of our products is tested to ensure we meet exacting customer requirements.

Emma spent time working in our commercial department, as well as also experiencing the labs; and Eddie and Anthony worked

*"I was made to feel very welcome, and everyone was very good at explaining what they were doing and why."*

Emma

with a variety of our teams from the engineering workshop to quarry operations and the Curzon Lodge Transport Depot garage.

Group Managing Director Paul Boustead commented: "A large percentage of our employees are from the local area, and we are keen to continue this tradition by encouraging young people to come in, get to know us and see how many different types of roles we offer."



Above: Emma and Belle at the Brassington Moor Quarry viewing platform. Left: William and Seth in the Longfloor Laboratory with Laboratory Technician Christian Mallard

*"The laboratory in the quarry was different to what I was expecting for a laboratory setting and I found it was a very relaxed environment which made it an interesting experience."*

William



*"There wasn't a dull moment, I really enjoyed my time in the Laboratory at Longfloor working with Christian and I learnt a lot."*

Seth

## Inspiring careers day for Wirksworth students

In a jam-packed day covering most aspects of our business, we hosted an inspiring careers visit by students from Anthony Gell School in Wirksworth.

The visit to Longcliffe was one of the four options given to Year 9 students as part of their Key Stage 3 Careers Week which aims to give students an insight into potential future careers.

The group began with a visit to our training room and laboratory where they heard about careers in processing (or production), engineering and science. From there they were taken on a tour of Brassington Moor Quarry. Next stop was the transport depot where they heard all about logistics and motor mechanics. The trip was finished off with a visit to Ryder Point Quarry, a close-up view of the wind turbines and a discussion about geotechnical planning and working of quarry faces.

Comments from the students included:

- I enjoyed the Longcliffe trip very much, I do want a career in Longcliffe, and this has persuaded me even more. I liked the explosion bits the best.
- I really enjoyed my trip; the questions were all excellently answered by incredibly inviting and welcoming staff. Great experience.
- I really enjoyed learning about the stone quality checking process, I can see myself doing something similar in the future.
- Thank you for a great opportunity it was very immersive, and I learnt a lot.

Teacher Jay Grindey added: "The visit was an invaluable experience, providing our students with a real-world perspective on the diverse career paths available within the quarrying and processing industry.

The enthusiasm and engagement shown by both the Longcliffe team and our students made for an inspiring and educational day. We look forward to continuing our partnership in the future."

*Anthony Gell School students give a thumbs up to their visit to Longcliffe – with Health and Safety Manager Tony Woodroffe (left)*



## Sky high technology for blast planning

Drone cameras have been used in quarry development and surveying for over ten years but now – with advanced technology and more affordability - they have begun to play an important role in blast planning.

Quarry Manager Jon Murgatroyd explains more: "Planning our blasts is a complex process, governed by geology, product need, quarry progression and most of all safety. Up until now we have used a laser scanner which is placed in front of the rock face and scans

what it sees to create a 'point cloud'. This is then input into our blasting software to produce a 3D model for our blasts.

"The drone technology uses 200 to

300 photos. Using photometry these photos are overlapped and used to create a more detailed and informative 3D point cloud. The drones are easier to operate and provide us with a range of additional useful information including producing 3D models in colour. They also help us position our blast holes more precisely, avoiding clay joints and achieving better chemistry in the blasted rock.

"Weather will be a limiting factor in the use of these drones but over the next six months we will move to a combination of drone and scanner use for blast planning, helping us get the most out of every blast."

As with all areas of our operation we are continually looking for the most efficient and affordable technology. The drones are the most modern in quarry use and our whole explosives team have completed a drone training course to become qualified 'pilots'.



## Top marks for energy efforts

We're proud to continue to gain top marks in our audits for compliance with ISO 50001 – the international standard for energy management.



*The solar panels being installed at Curzon Lodge Transport Depot*

Covering all our sites, this standard ensures we have robust systems in place to monitor and reduce energy usage across the business. That includes the diesel used in our fleet and mobile plant, electricity powering crushers and mills, and gas for drying.

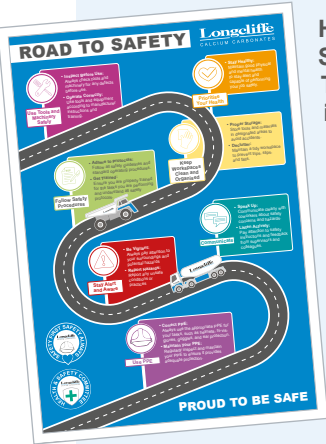
ISO 50001 is more than a certification – it's part of our long-term commitment to responsible operations and continuous improvement. Our most recent audits raised no non-conformances or recommendations for improvement – a great endorsement of the work being done across the team.

As we go through regular audits we're aiming for continued positive feedback as we continue to invest in energy-efficient plant and processes to help meet our carbon reduction targets.

Here are some of the key projects that are contributing to our increased energy efficiency across the business:

- Investment and installation of new 'TCM' mills
- Ongoing Hydrogenated Vegetable Oil fuel testing for our fleet
- Plans to install solar panels on the roof of our Curzon Lodge Transport Depot
- Investigating feasibility of waste heat recovery options from the TCM mill and the Pyro exhaust.

## Our safety roadmap



Health and Safety Manager Tony Woodroffe introduces our recently launched 'Road to Safety': "This eye-catching, practical visual guide (above) was created by the workforce,

for the workforce, drawing on the day-to-day insights of our team members across the business. The Health and Safety Committee, made up of employee representatives from various departments, collaborated to design the content, ensuring that the safety messages speak directly to the real challenges and routines of all our sites."

The Road to Safety outlines seven key principles that reflect Longcliffe's proactive approach to health and safety:

1. Use Tools and Machinery Safely
2. Prioritise Your Health
3. Follow Safety Procedures
4. Keep Workspaces Clean and Organised
5. Communicate
6. Stay Alert and Aware
7. Use PPE

Each message includes clear, actionable tips, such as inspecting equipment before use, maintaining mental and physical wellbeing, and always using the correct personal protective equipment (PPE).

Group Managing Director Paul Boustead adds: "What makes this initiative stand out is the way it brings together practical advice with genuine employee voice. The ideas have been developed by the team for the team. The Committee had open discussions and fed back to their own departments to ensure the poster reflects not just policies, but the lived experiences of those working on the ground. It's part of our ongoing journey to embed a strong, inclusive safety culture—one where every voice matters and we have a common purpose – **PROUD TO BE SAFE.**"

## Training

Our commitment to Safety, Health and Environment (SHE) training goes above and beyond, with significant investments to ensure our team is highly skilled and knowledgeable.

Currently we have a large group of team members (pictured right) working towards high level safety qualifications:

- ✔ 12 employees working towards or holding a Level 4 NVQ in Safety, Health and Environment
- ✔ 4 employees working towards a more advanced Level 6 NVQ
- ✔ 1 employee on the National Diploma
- ✔ 2 employees training to assess competency in-house with Certificate in Assessing Vocational Achievement (CAVA) qualifications



L-R Colin Roper, John Palin, Tony Woodroffe, Sarah Wholey, Kieran Raybould, Shaun Gilbert)



L-R Matt Hollands, Joe Wardman, Roy White, Gareth Slack, Jack Power)

## Summer safety refresh



Teams take part in the 'Safety-Busters' game to help refresh safety knowledge

**Twice a year we run a safety refresh campaign for all our employees and regular contractors. This year the theme was Revisit, Refresh, Reboot.**

It aimed to Revisit key safety protocols; Refresh knowledge on hazard identification and control measures; and Reboot mindsets to reinforce our

policy that safety isn't just a rule, it's a culture.

Teams were taken through various sessions to encourage them to 'See it. Own it. Act on it' including a 'Safety-Busters' game which was delivered by the members of the Health and Safety Committee.

## Jeremy swaps four wheels for two!



Jeremy Dutton (left) is presented with a special retirement cake by Longcliffe Group Chairman Robert Shields

After many years in the world of minerals and industrial materials, and 15 years with Longcliffe, Jeremy Dutton is looking forward to his retirement. As Sales Manager for the Northern Area covering Mid-Wales across to Norfolk and right up to Scotland, Jeremy's job has seen him put in a lot of miles. With Longcliffe's industrial powders being used in a wide range of products from animal feeds to bottles, his customer visits were extremely varied - from farms to glassworks and plastic producers.

"I am looking forward to hanging up the car keys at least for the rest of this year," said Jeremy. "I have enjoyed my job and meeting a lot of nice people in many different industries. I've also loved seeing a lot of the country but it's time for me to focus on other interests now. Whilst I won't do many miles in the car this year, I will be hitting the road on my BSA motorbike, as well as spending more time fishing and with my grandchildren."

Longcliffe Group Managing Director Paul Boustead added: "We wish Jeremy the happiest of retirements - he will be much missed by both the Longcliffe team and customers."

### KEEP IN TOUCH



We would love to hear your views on Longcliffe LoCal. Please email your comments and questions to us at [info@longcliffe.co.uk](mailto:info@longcliffe.co.uk)

Here at Longcliffe we are proud of the role we play in the local community. For almost 100 years Longcliffe has been an important local employer, now with a team of over 190 people. We contribute around £20 million to the local economy each year – both directly through wages, and indirectly through the local suppliers we use.

We also actively support the local community through project sponsorship, visits and stone donations. Here are just a few recent highlights:

## Matlock Juniors hosts festival of football

Our long-standing partnership with Matlock Town Juniors Football Club has continued through sponsoring the Club's summer festival.

The 2025 Football Festival took place over two days – 14 and 15 June - with both boys' and girls' taking part, from Under 7s through to Under 15s.

The Club's Nick Newbury said: "We had over 150 teams taking part this year. With each team consisting of eight or more players, we enjoyed welcoming them and their family and friends from all over Derbyshire and further afield. We hope we made it a festival to remember."

Longcliffe's involvement with the Club goes back several years, with the most recent project being the company's support for fund-raising for a new Astroturf surface. The Astroturf means the Club is now fully subscribed at peak



One of the teams that took part in the summer festival

times enabling more girls and boys to play football on a modern, safe surface.

Longcliffe Group Managing Director Paul Boustead added: "We congratulate Matlock Town Juniors FC which is going from strength to strength as an important community sports club. Players are enjoying the new all weather surface and the Club is continuing to grow – it now has 29 teams and over 500 boys and girls regularly getting involved."

For more information please contact [matlocktownjrs@gmail.com](mailto:matlocktownjrs@gmail.com).

## Donation boosts Ashbourne ju-jitsu club safety

A sponsorship donation has meant that new 'tatami' mats could be installed for the 40 students who attend Ashbourne Kansen Ryu Academy Ju-Jitsu Club.

The Club, whose mission for over 20 years has been to 'build confidence, discipline, fitness and self-defence skills in a safe, respectful and encouraging environment', had been fund-raising for four years to replace the mats used by children from five years old up to adults.

Stepping on to the tatami mat is said to be sacred entry into the martial arts zone. The mats form the focal point

for the Japanese Ju-Jitsu training 'dojo' or training area.

Longcliffe's £500 donation has helped the Club reach its target and therefore provide a safer training environment for the students.

Lead instructor Rob Oxley said: "We're incredibly grateful to Longcliffe for their generous support. Their donation helped us reach our fundraising goal and will allow us to install new mats that are essential for safe and effective training. This investment improves the experience for our current students, and also ensures we can continue supporting children and adults in our community for years to come."

For more information please contact Robert Oxley via Email: [ashbournekansenryu@gmail.com](mailto:ashbournekansenryu@gmail.com) or alternately call or text: 07810020804.



Lead Instructor Sensei Rob Oxley (right) with Longcliffe Commercial Director Darren Mooney